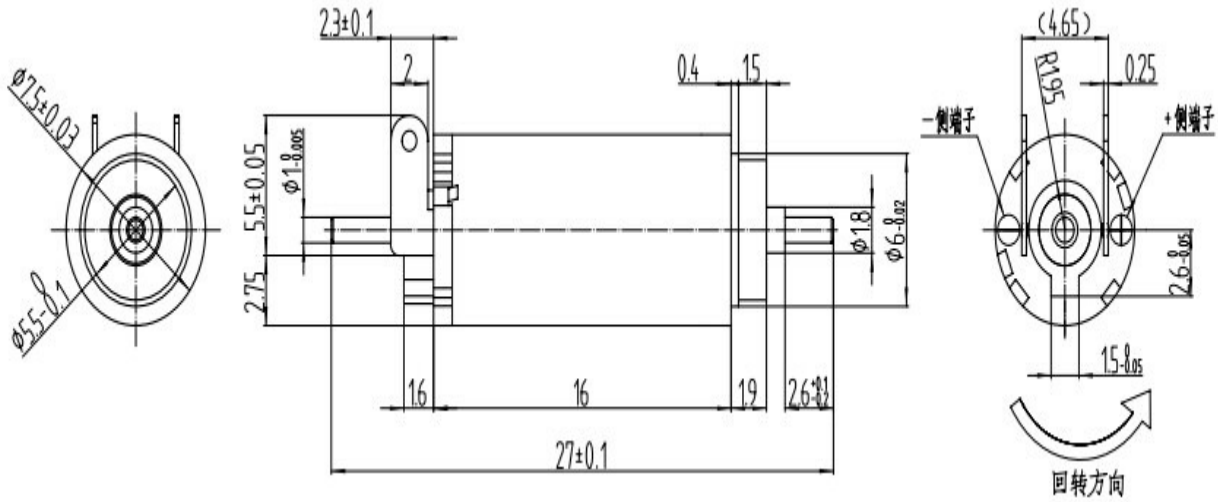


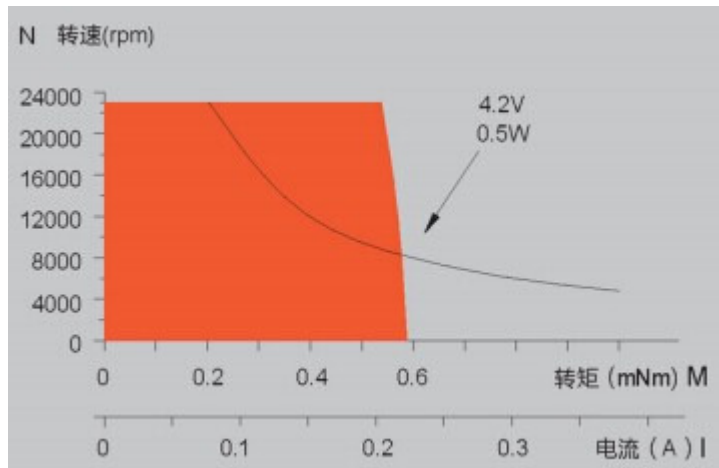


DR0816E

DIBUJO



CURVA



CARACTERISTICAS

电机参数 Motor Data

电机型号 motor model			DR081602E	DR081604 E	DR081606E	DR081607E	DR081609E	DR081612E
1 标称电压 nominal voltage	V	V	2.4	4.2	6.0	7.2	9	12
2 空载转速 no load speed	rpm	Wnl	14000	14300	13400	14400	14500	15700
3 空载电流 no load current	mA	Ini	15.6	9.2	6.0	5.4	4.4	3.8
4 额定转速 nominal speed	rpm	Wc	9360	9620	8620	9310	9860	10500
5 额定转矩 nominal torque	mNm	Tc	0.3	0.3	0.3	0.3	0.3	0.3
6 额定电流 nominal current	A	Ic	0.19	0.11	0.07	0.06	0.05	0.04
7 输出功率 output power	W	Pc	0.29	0.30	0.27	0.29	0.31	0.33
8 堵转转矩 stall torque	mNm	Tmax	0.92	0.94	0.86	0.87	0.96	0.93
9 堵转电流 starting current	A	I _{max}	0.58	0.34	0.21	0.19	0.17	0.13
10 最大效率 max efficiency	%	η_{max}	64.9	65.7	62.4	62.7	66.2	65.1
11 相间电阻 terminal resistance	Ω	R _t	4.13	12.3	29.0	38.5	54.3	92.2
12 转矩常数 torque constant	mNm/A	K _t	1.59	2.74	4.15	4.63	5.77	7.11
13 速度常数 speed constant	rpm/A	W _t	5994	3499	2300	2059	1655	1348
14 速度转矩比 speed torque gradient	rpm/mNm	$\Delta n/\Delta T$	15467	15600	15933	16967	15467	17333